

# **OHASIS<sup>®</sup> Product Profile**

OHASIS provides a structure for the management of risk in the workplace. It is a powerful analytical system, releasing the full potential of computer based information management to enhance risk and loss control in work settings. It is a management tool, not just a simple recording system. It is designed around a unique conceptual framework that promotes:

- optimum risk control strategies
- the incorporation of best practice standards
- effective injury management
- the use of appropriate OH&S performance measures
- standardised information gathering

## **Benefits**

Maximises control over risk

Develops a rational risk management culture within the organisation

Provides a framework for the application of 'Best Practice' standards

Ensures an organisation wide consistency in approach

Eliminates duplication of effort

Builds a readily accessed database of information for more effective decision making

Facilitates prioritisation for resource allocation

Provides appropriate measures to assess OH&S performance

Reduces losses through more effective injury management utilising the 'Pathways' approach to Injury Management

# Modules

The OHASIS software currently incorporates the following subsystems:

- Hazard Management
- Occurrence Recording
- Injury Management
- Health assessments
- Health Monitoring
- Incident Management

## General System Features

- Very user friendly incorporating standard window functions and the ability to run the whole system from a case file screen
- Structured approach to data entry with configurable drop down lists
- Provides an audit trail of system usage
- Security control by means of access rights and security roles
- Can use separate systems for various risk groupings eg employees v clients
- Reports can be created in HTML, EXCEL or PDF formats
- Can create a case file containing all the information in the system relevant to an employee, claim or occurrence
- Can compress and export case files in a secure format for transportation
- Powerful statistical reporting function including cross tabulated statistical reports in which data can be presented in a variety of user defined ways
- Provides a unique **outcome** measure of health and safety performance, the Safety Performance Index which is a measure of both risk and loss control
- Provides an administrative facility for the management of documentation pertaining to occupational health and safety.



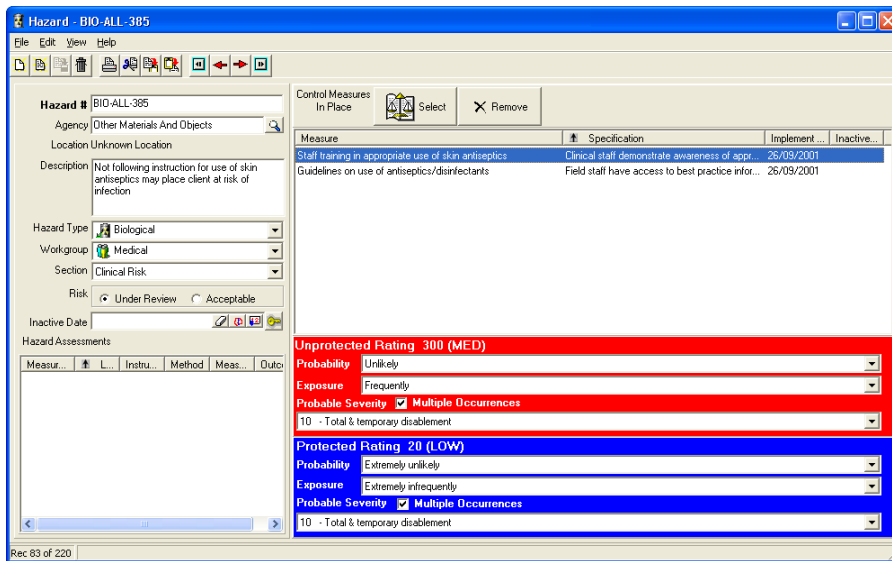
## Hazard Management

The Hazard Management Subsystem has the following features:

### *Risk manager*

- Provides a structured basis for the recording of hazards which complies with best practice standards:
- Calculates and records the risk in both the uncontrolled and controlled states using a semi-quantitative relative risk assessment method:
- Provides a structured basis for recording control measures and linking control measures to specific hazards:
- Facilitates the auditing of control measures and monitors the continued integrity of those control measures:

- Provides a history of assessments for each hazard and associated control measure(s)
- Provides a unique measure of OH&S performance, the Control Integrity Index, which is a direct measure of risk and compliance with control measures.

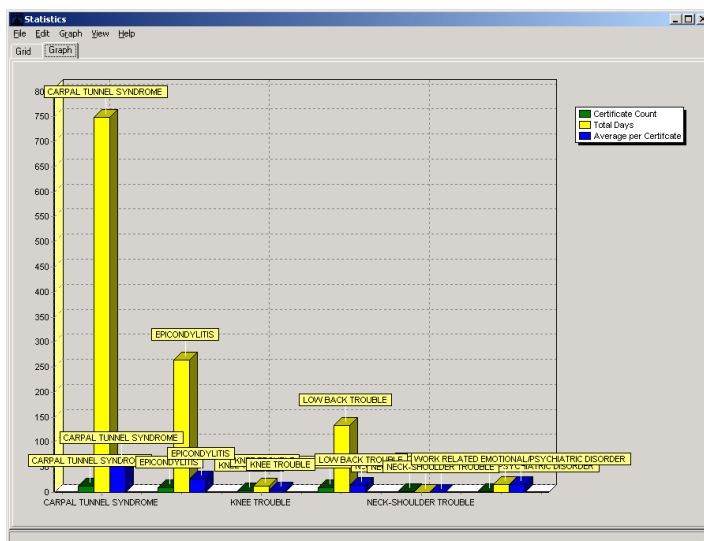


### Job builder

- Defines and records jobs in terms of their component tasks and activities and links hazards, and their associated control measures, to those jobs: and
- Both theoretical and real jobs can be built for job planning purposes or for providing on-the-job information about control measures.

### Reports

- Provides reports on hazards and control measures and control measure compliance and can calculate and graphically display a Control Integrity Index for the organisation, division and workgroup: and
- Provides report which lists the control measures associated with a job



Statistics

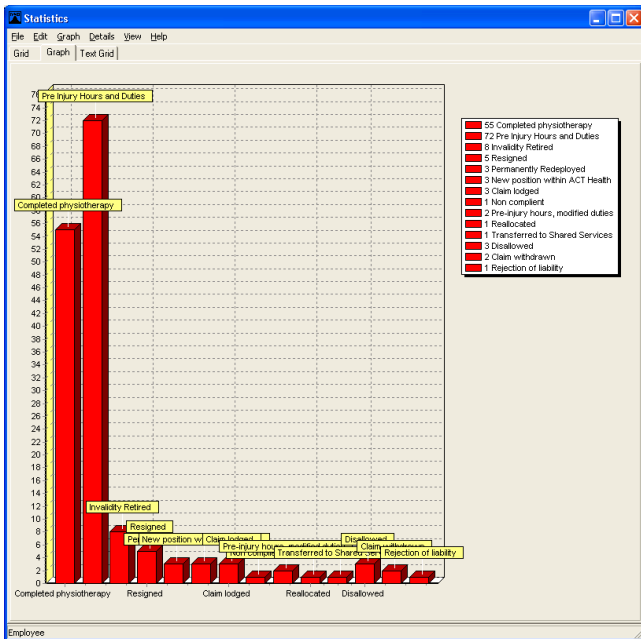
File Edit Graph Details View Help

Grid Graph Text Grid

Inactive Dimensions: Employee, Start Year, Location, Outcome, Status, Workgroup, End Year

Columns: Start Month, February, June, July, September, October, January, August, March, November

Position	Count	Value	Count	Value	Count	Value	Count	Value	Count	Value	Count	Value
All	3.00	40.00	4.00	10.00	2.00	3.00	9.00					
Physio	1.00											
Professional nec	1.00	23.00	1.00	1.00								
Health Professionals nec	8.00	499.00	9.00	12.00	9.00	9.00	37.00	1.00				
Librarians and Related Workers nec	2.00	36.00		1.00	1.00	3.00						
Medical Laboratory Technicians		25.00				1.00	2.00					
Intermediate Clerical Workers nec	1.00	143.00	3.00	4.00		2.00	12.00	1.00				
ASO 2	2.00	2.00	1.00	2.00	1.00			1.00				
Personal Care Assistant		43.00	1.00	1.00	2.00	2.00	1.00	1.00				
ASO 3			2.00	1.00	2.00							
Registered Nurse	3.00	11.00	3.00	4.00	5.00	3.00	7.00	4.00				
Enrolled Nurse	1.00	112.00	5.00	5.00	2.00	3.00	13.00	2.00				
OSP	1.00						1.00					
Swifter							1.00	1.00				
Warehouseperson		1.00			1.00	1.00	1.00	1.00				
Fire		5.00										
Radiographer			1.00									
Administration								1.00				
Electronic Equipment Technicians		8.00										
Plant and Machinery Operatives												



Statistics

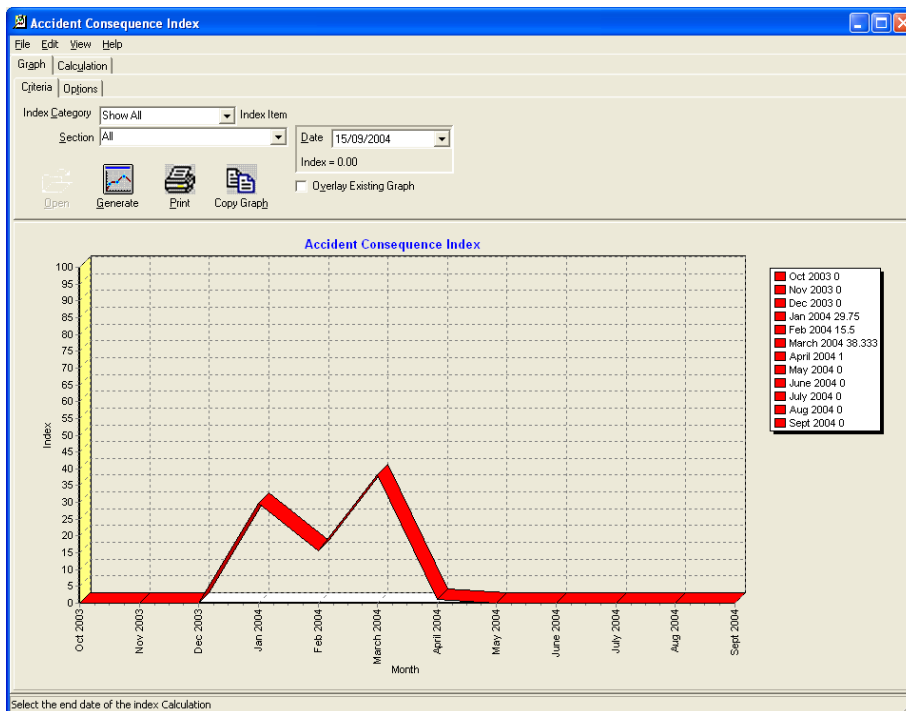
File Edit Grid View Help

Grid Graph

Inactive Dimensions: Month, Day, Medical Ph, Employee, Case Warr, Year

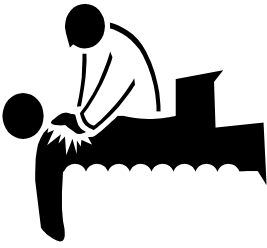
Columns: Incapacity

Condition	Incapacity			Restricted Duties			Totally Incapacitated			Usual Duties		
	Certificate Count	Total Days	Average per Certificate	Certificate Count	Total Days	Average per Certificate	Certificate Count	Total Days	Average per Certificate	Certificate Count	Total Days	Average per Certificate
CARPAL TUNNEL SYNDROME	5	99.00	19.80	5	650.00	130.00	3					
EPICONDYLITIS	6	204.00	34.00	4	60.00	15.00						
KNEE TROUBLE				2	12.00	6.00	1					
LOW BACK TROUBLE	5	81.00	16.20	2	52.64	26.32	2					
NECK/SHOULDER TROUBLE							1					
WORK RELATED EMOTIONAL/PSYCHIATRIC DISORDER					1	15.00	15.00					
<b>Total by COLUMNS</b>	<b>16</b>	<b>384.00</b>	<b>24.00</b>	<b>14</b>	<b>789.64</b>	<b>56.40</b>	<b>7</b>	<b>0.00</b>	<b>0.00</b>			



## Occurrence Recording Subsystem

- Facilitates the recording of the hazard, associated with the occurrence, in the hazard database (if it has not already been recorded):
- Facilitates an assessment of the control measures which had been implemented, but were not in place, at the time of the incident or accident:
- Facilitates an assessment of the control measures which could be implemented to reduce the likelihood of a similar occurrence:
- Allows the recording of occurrences according to specified classification systems:
- Provides for the recording of parameters associated with an occurrence and consequent injury and property damage as well as production loss:
- Allows detailed statistical breakdown of occurrence data:
- Provides a unique measure of OH&S performance, the Occurrence Control Index, which is based on injury experience: and
- Calculates Lost time injury frequency rates



## Injury Management Subsystem

- Allows the tracking of individual claims:
- Allows the tracking of interventions, including next scheduled interventions:
- Allows recording of medical information, certificates and intervention details
- Links claims to evidence based medicine database to provide information about effective treatment protocols for medical conditions:
- Facilitates claims liability assessments:
- Provides the tools to identify and manage (potentially) long term claims using the 'Pathways' process:
- Linkage of claims to occurrences and workplace hazards: and
- Provides a unique measure of OH&S performance, the Accident Consequence Index, based on the duration of absences

Agency: OTHER EQUIPMENT  
Mechanism: MUSCULAR STRESS WHILE LIFTING, CARRYING, PUTTING D  
Injury Type: SPRAINS AND STRAINS OF JOINTS AND ADJACENT MUSCLE  
Body Part: SHOULDER  
Medical Condition:   
Initial Contact:   
Reported Date:   
Received Date: 06/09/2006  
Entered Date: 20/09/2006  
Physio Date:   
Is Work Related:  Yes  No  
Potential Claim:  Yes  No  
Accident Form:  Yes  No

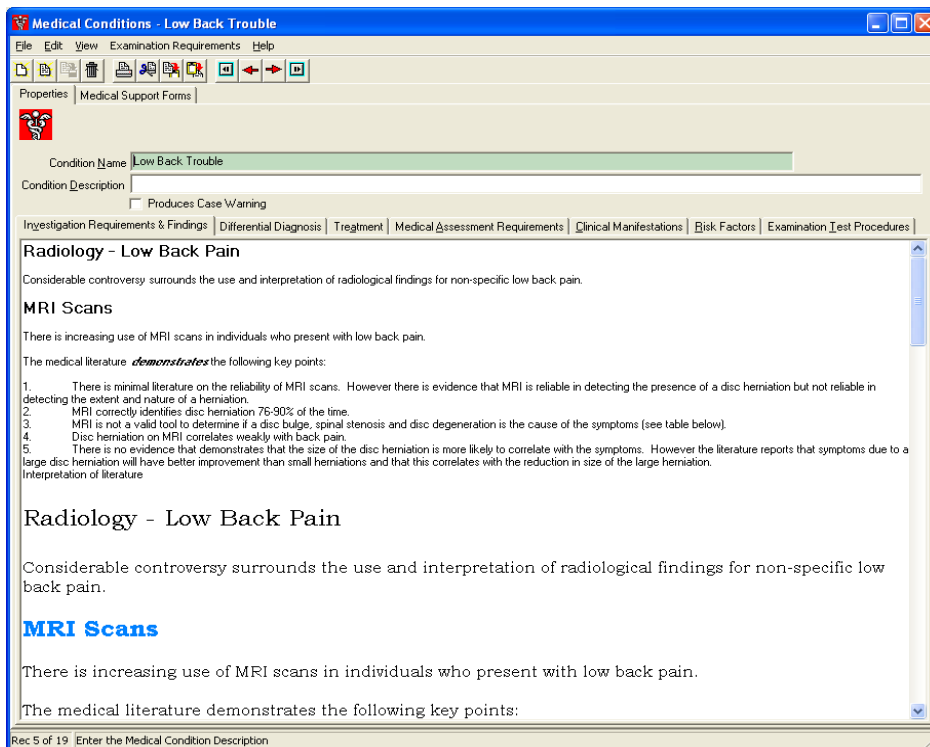
Rec 14 of 28 Select the appropriate injury mechanism

Case ID:   
Description:   
Start Date:   
End Date:   
Is Closed:   
Employee:   
Status:   
Outcome:



## Health Assessments & Medical Monitoring

- Allows job specific health assessment forms to be created and maintained
- Allows recording of medical information and interventions
- Provides for automatic recall of personnel for interventions to be performed eg vaccinations
- Allows the information collected to be analysed for health trends
- Provides user defined health alerts
- Allows linkage of the information collected to hazard exposures and accident experience
- Provides standardised health assessment forms to collect detailed, specific information for a range of medical conditions
- Provides a Medical Condition Database for the more common work-related conditions



## Incident Management

- Allows the recording of the various types of incidents/events which can occur in an organisation
- Provides detailed analysis of these incidents/events with the capability to develop a taxonomy of the incidents/events
- Facilitates the development of a database of the problems/hazards which can result in the incidents/events, thereby minimising the likelihood of the incidents/events
- Provides user defined alerts to facilitate timely responses to incidents/events
- Tracks the implementation and maintenance of measures to reduce the likelihood of (recurrence of) an incident/event
- Provides an assessment of compliance with the measures implemented to reduce the likelihood of the incidents/events (Control Integrity Index)
- Standard reports are available with the system. These report formats are stored and maintained in an external file so report changes will not require a new release.
- Reports are able to be exported in a native format, HTML, PDF, RTF or Microsoft word format. There are a number of cross tabulated statistical reporting options for data that warrants this type of analysis
- Export to any of the Microsoft office products is available



**Incident Form**

Event Details | Reported To | Consequence Details | Investigation | Factors | Recommended Measures

Incident Number: 456455

Incident Type: Theft

Description: Patient has reported a stolen wallet. The wallet contained credit cards, drivers licence and \$50 cash. The wallet went missing while the patient was out of ward.

Date of Occurrence: 03/08/2007 9:14:26 AM

Notifier Type:  Patient  Employee  Other

Patient Id: 43422145

**Incident Form**

Event Details | Reported To | Consequence Details | Investigation | Factors | Recommended Measures

Reported Date: 08/08/2007 1:14:26 PM

Reported To: John Smith Position: Operations Manager

Witness Name: Andrea XXXX

Michael YYYY

*For more information on IMS products please contact:*

**Integrated Medical  
Systems**  
 Level 2, 31 Merivale  
 Street  
 South Brisbane, QLD, 4101  
 Australia  
 Telephone (61 7) 3255 3878  
 (61 7) 3398 9500  
 Fax (61 7) 3398 9822  
 Email: [sales@ims.com.au](mailto:sales@ims.com.au)

Or visit our Web Site [www.ims.com.au](http://www.ims.com.au)  
*IMS products may be subject to change without notice*